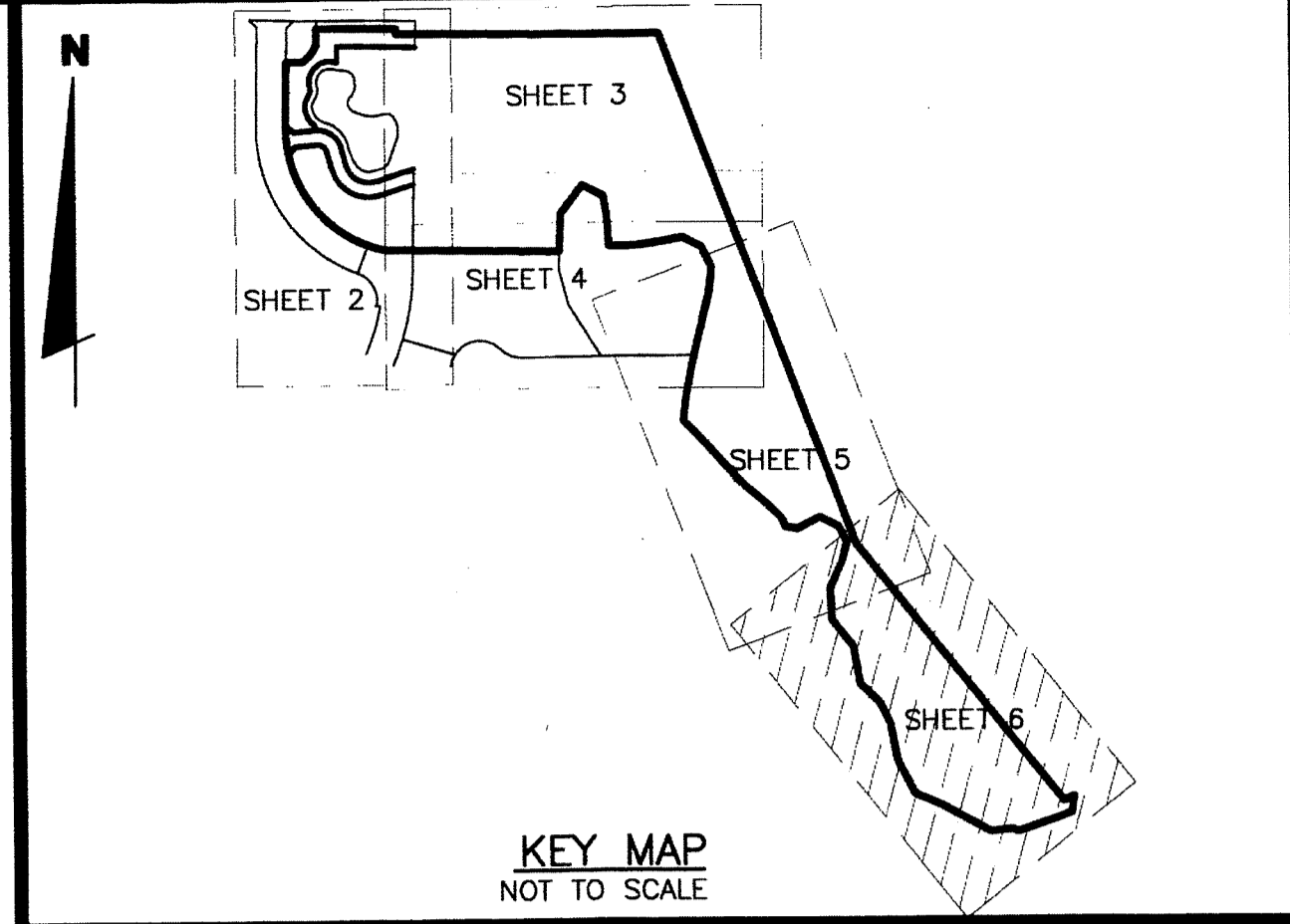


1006-883

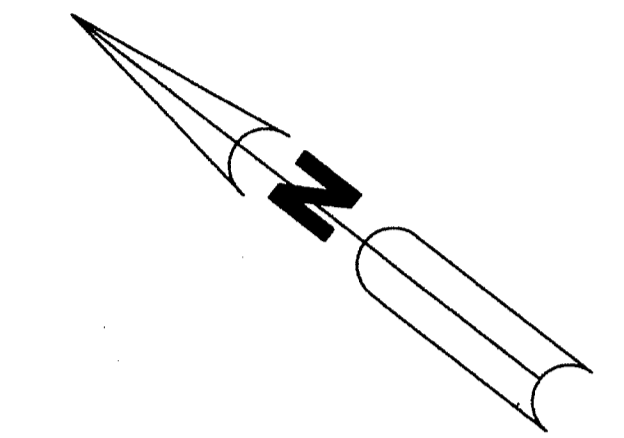
WATERWAY PARK, A PORTION OF JONATHAN'S LANDING P.U.D.

LYING IN SECTIONS 6 AND 7, TOWNSHIP 41 SOUTH, RANGE 43 EAST, PALM BEACH COUNTY, FLORIDA, BEING A REPLAT OF ALL OF WATERWAY COUNTY PARK, RECORDED IN PLAT BOOK 31, PAGE 10, AND THE CIVIC CENTER AND PRIVATE BUFFER PARCELS OF JONATHAN'S LANDING PLAT SIX, RECORDED IN PLAT BOOK 47, PAGE 10, OF THE PUBLIC RECORDS OF PALM BEACH COUNTY, FLORIDA

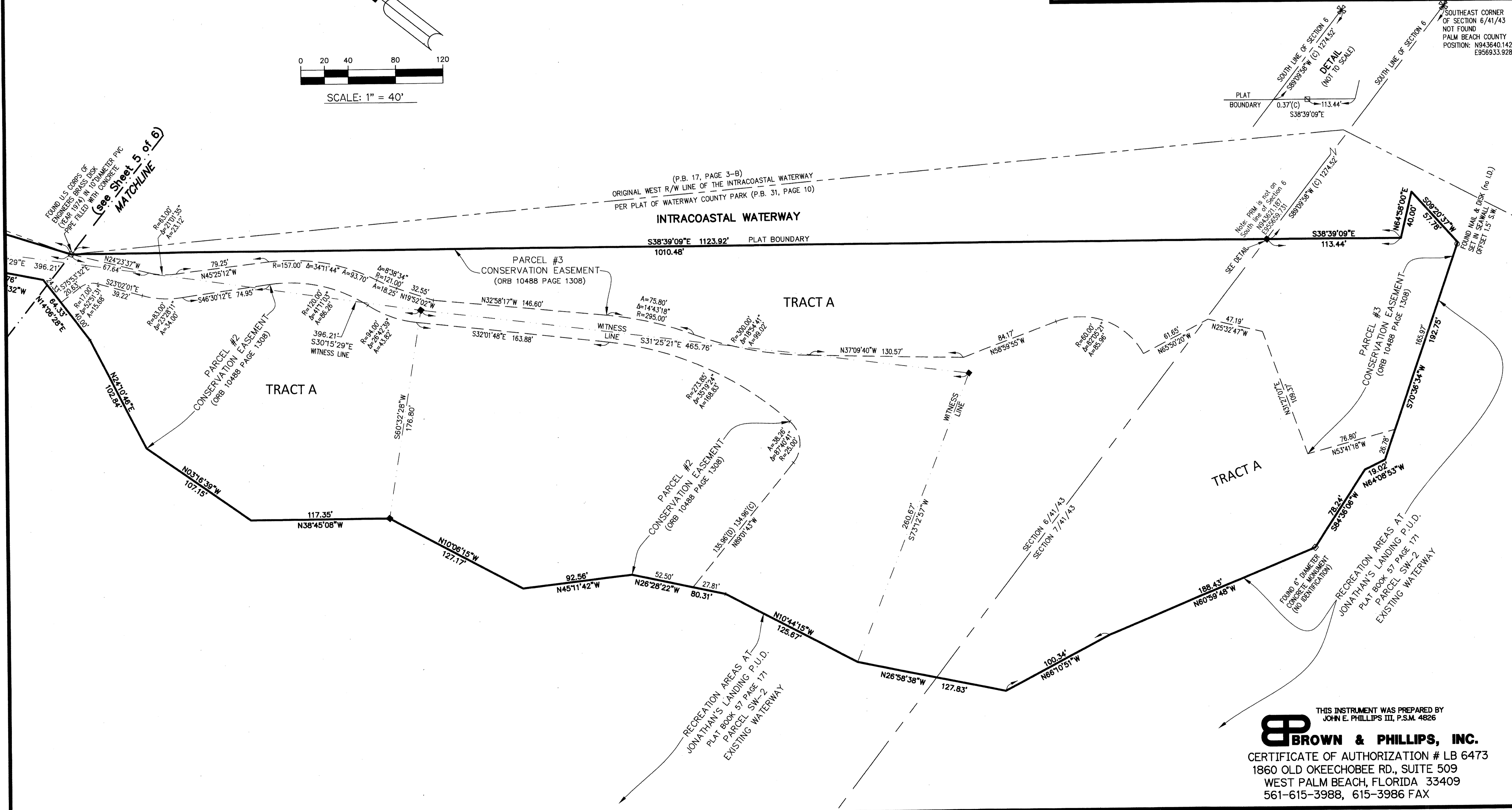
202



SHEET 6 OF 6



SCALE: 1" = 40'



SOUTHEAST CORNER OF SECTION 6/41/43 NOT FOUND PALM BEACH COUNTY POSITION: N943640.142 E956933.928

THIS INSTRUMENT WAS PREPARED BY JOHN E. PHILLIPS III, P.S.M. 4826
BROWN & PHILLIPS, INC.
CERTIFICATE OF AUTHORIZATION # LB 6473
1860 OLD OKEECHOBEE RD., SUITE 509
WEST PALM BEACH, FLORIDA 33409
561-615-3988, 615-3986 FAX